

## Case Study: Goods Lift Relocation from West Yorkshire to South Wales

### Case Study – Goods Lift Relocation from West Yorkshire to South Wales

#### Brief

To remove a goods lift in one piece from Castleford in West Yorkshire, deliver to Pontypridd in South Wales and position inside new building. Work to include re-engineering of support legs to ensure lift level when in position and steel bracing to prevent lift twisting whilst being laid down for transport.



Left and Below – The lift once all the asbestos sheeting and lower blockwork was removed.



## Case Study: Goods Lift Relocation from West Yorkshire to South Wales



Above – Preparing the entry and exit points so the lift was free for removal.

## Case Study: Goods Lift Relocation from West Yorkshire to South Wales



Above – Some careful calculations were made beforehand to ensure the right size of crane was used as no weights were available from the manufacturers. The bespoke lifting points and bracing used were designed by our engineers specifically for this job. As a side note we couldn't have asked for better weather.

## Case Study: Goods Lift Relocation from West Yorkshire to South Wales



Left – As is a common occurrence with many of our projects space was an issue. Many hours are spent planning projects with the client before we begin any site work. This ensures that everyone involved in the project has a clear understanding of the work to be undertaken and their key responsibilities.



Right – Setting up the equipment ready to tandem lift the assembly into a horizontal position for transport.

## Case Study: Goods Lift Relocation from West Yorkshire to South Wales



Left – ready to start laying down the assembly.

Below – our personnel guide the operators whilst the lift is laid down.



## Case Study: Goods Lift Relocation from West Yorkshire to South Wales



Left – nearly there! Just the 200 mile journey to the new site to go.

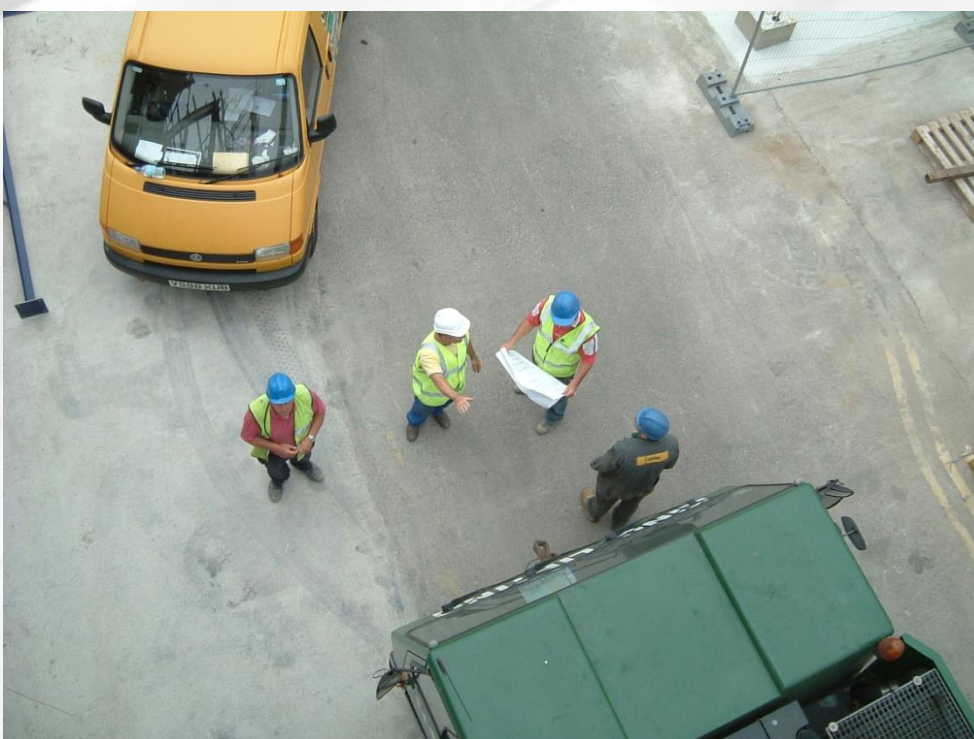
Below – all secured and ready for the off.



## Case Study: Goods Lift Relocation from West Yorkshire to South Wales



Above – the plant is positioned ready to commence the installation.

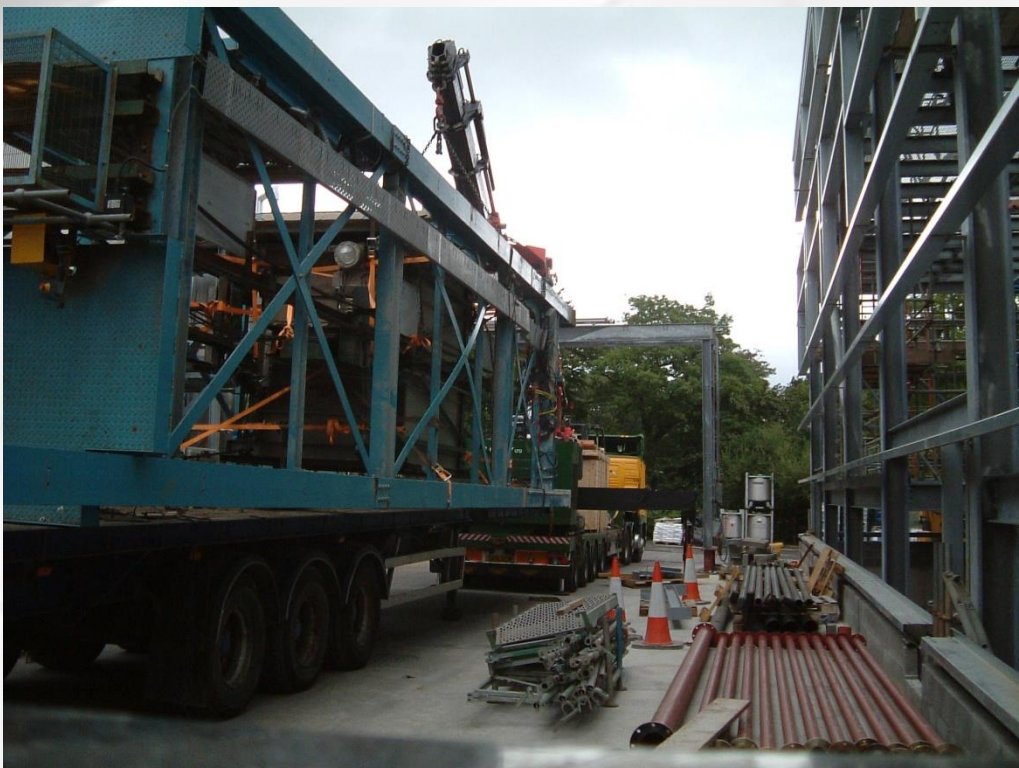


Left – some last minute checking of plans with the client

## Case Study: Goods Lift Relocation from West Yorkshire to South Wales



Left – positioning the winding gear



Left – ready to lift, as usual we are fighting for space all the way!



## Case Study: Goods Lift Relocation from West Yorkshire to South Wales



Above and left – carefully raising the assembly upright.

## Case Study: Goods Lift Relocation from West Yorkshire to South Wales



Above – the new feet are secured to the lift base.



Left – the lift is carefully ‘threaded’ between the building’s steelwork into its final position.

## Case Study: Goods Lift Relocation from West Yorkshire to South Wales



The client gives the 'OK' and it's another job well done.